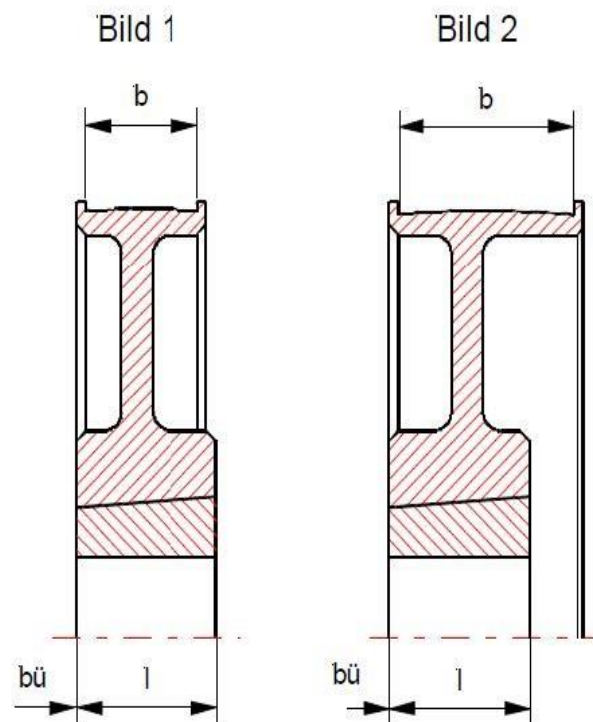
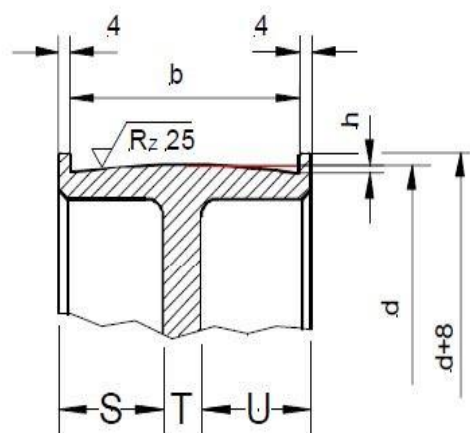


# Taper-Flachriemenscheiben mit Bund



Bezeichnung:

- b = Kranzbreite
- l = Nabenlänge
- L = Lage zum Kranz
- bü = bündig
- rü = Rücksprung
- v = Vorsprung

Ausführung:

- = Vollscheibe
- = Bodenscheibe  
(mit o. ohne Spiegel)

Material: Guss

**b = 32**

d	Buchse	h	Nabe		Bild	Typ	S	T	U	Gewicht kg
			Länge	Lage						
63	1108	0.3	23	bü	2	●	-	-	17	1.0
67	1108	0.3	23	bü	2	●	-	-	17	1.0
71	1210	0.3	26	bü	2	●	-	-	14	1.0
75	1210	0.3	26	bü	2	●	-	-	14	1.0
80	1210	0.3	26	bü	2	●	-	-	14	1.2
85	1210	0.3	26	bü	2	●	-	-	14	1.2
90	1610	0.3	26	bü	2	●	-	-	14	1.3
95	1610	0.3	26	bü	2	●	-	-	14	1.3
100	1610	0.3	26	bü	2	●	-	-	14	1.3
106	1610	0.3	26	bü	2	●	-	-	15	1.5
112	1610	0.3	32	bü	2	●	-	-	14	1.6
118	1610	0.3	26	bü	2	●	-	-	14	2.0
125	1610	0.3	26	bü	2	●	-	-	14	2.1
132	2012	0.3	32	bü	2	●	-	-	8	2.6
140	2012	0.3	32	bü	2	●	-	-	7	2.6
150	2012	0.3	32	bü	2	○	13	13	14	3.8
160	2012	0.3	32	bü	2	○	13	13	14	4.4
180	2012	0.3	32	bü	2	○	14	12	14	4.8
190	2517	0.3	45	bü	2	○	15	11	14	4.8
200	2517	0.3	45	bü	1	○	15	11	14	5.0
212	2517	0.3	45	bü	1	○	15	11	14	5.4
224	2517	0.3	45	bü	1	○	15	11	14	5.6
236	2517	0.3	45	bü	1	○	15	10	15	6.2
250	2517	0.3	45	bü	1	○	14	11	15	6.4
280	2517	0.3	45	bü	1	○	14	11	15	7.1

**b = 50**

d	Buchse	h	Nabe		Bild	Typ	S	T	U	Gewicht kg
			Länge	Lage						
100	1610	0.3	26	bü	2	●	-	-	32	3.0
106	1610	0.3	26	bü	2	●	-	-	32	3.0
112	2012	0.3	32	bü	2	●	-	-	26	3.2
118	2012	0.3	32	bü	2	●	-	-	26	3.2
125	2012	0.3	32	bü	2	●	-	-	26	3.5
132	2012	0.3	32	bü	2	●	-	-	26	3.5
140	2012	0.3	32	bü	2	●	-	-	26	3.7
150	2012	0.3	32	bü	2	●	-	-	26	4.2
160	2012	0.3	32	bü	2	○	8	22	28	4.8
180	2517	0.3	45	bü	2	○	23	12	23	5.8
190	2517	0.3	45	bü	2	○	22	12	24	6.4
200	2517	0.3	45	bü	2	○	23	13	22	6.8
212	2517	0.3	45	bü	2	○	22	14	22	7.0
224	2517	0.3	45	bü	2	○	24	13	21	7.3
236	2517	0.3	45	bü	2	○	23	12	23	7.6
250	2517	0.3	45	bü	2	○	23	12	23	8.1
280	2517	0.3	45	bü	2	○	22	15	21	9.2
300	3020	0.3	45	bü	2	○	21	13	24	11.0